

Last Updated: 09th Feb 2013

The Next Generation of MultiSeis Live The all New Multiseis Global Manager

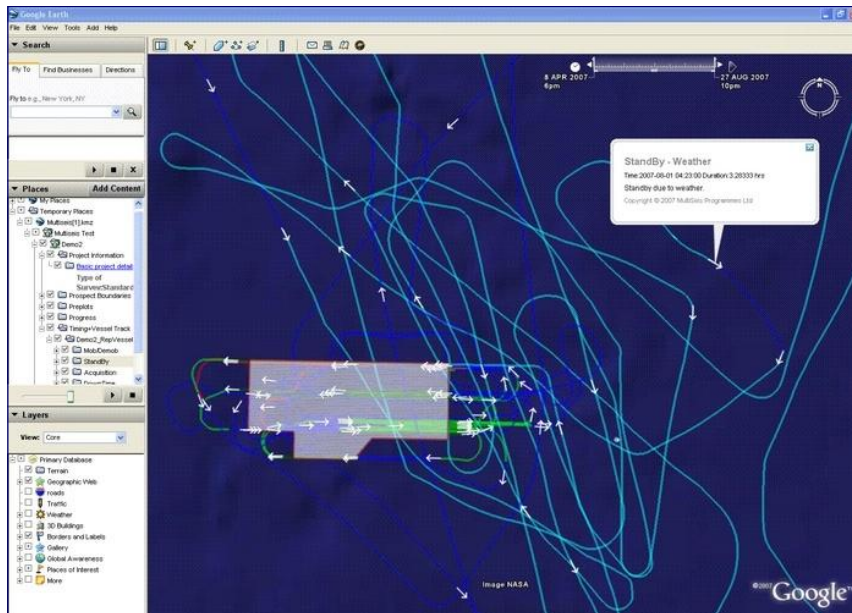
Includes Google Earth compatible downloads

Monitor

Archive

Summarise

Compare



MultiSeis Global Manager

The 'Company wide' Management Solution

MultiSeis Programmes Ltd **Multiseis Global Manager - Overview**

MultiSeis Programmes Ltd

Developers of unique, versatile, widely used and well supported software

Supplying to the oil & gas industry since November 2001

48 Gunton Drive
Lowestoft
Suffolk
NR32 4QB
United Kingdom

Phone: +44 (0)1502 530504
E-mail: info@multiseis.com
Web: www.multiseis.com

Internet Access

MultiSeis Global Manager allows unique and versatile presentations via a web browser. Includes project management plus optionally QC, GPS and AIS data allowing 24/7 vessel tracking.

Compatible with Google E

Data is available in kml format, allowing utilization of the power of Google Earth to display vessel track, local AIS data, pre-plots, progress etc.

Secure Upload and Access

The field data is encrypted and synchronised (updates only minimising data transfer) with a server ashore which allows access only to authorized users.

Detailed Analysis and Comparisons (Projects, Vessels & Companies)

Timing, Production, HSE (events, man hours, fuel usage), weather, feather, vessel speed etc data are available for interactive analysis and comparison.

Real-time and Archive

Data is active on the Global Manager within minutes of input. Both real-time and legacy data can be presented, enabling project monitoring from many perspectives (individual, vessel and company for any period).

Automatic Display

'Tour' utility available for Google Earth, displaying each active project in turn (designed for large screen displays).



MultiSeis

MultiSeis Global Manager - Data Upload, Access and Security

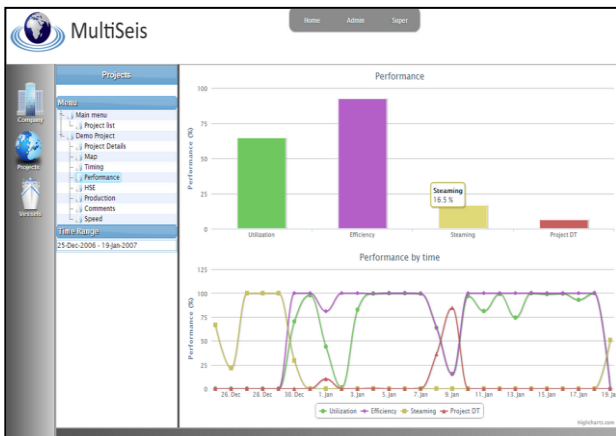
- **Encrypted and seamless** synchronisation between field database and shore-side server.
- Ability to **consolidate data** from various platforms to single project.
- **2 way comms** - Project defaults and consolidated updates are downloaded, data updates uploaded.
- **Minimal bandwidth usage** only updates are uploaded and data is compressed prior to transmittal.
- **Near real-time viewing**, data uploaded within minutes of entry/collation.
- **Fast and reliable** database driven website with secure (certificate enhanced) access via commonly available web browsers.
- Ability to allow **third party access** to specified projects.
- Data **backed up** daily to alternative server, client sites restored in minutes.

Opening View - Interactive quick launch flat earth display



MultiSeis Global Manager – Data Analysis Features

User-definable performance



Project timing – versatile presentation



- **Flat earth interactive display** of current plus legacy surveys and 'active' vessel positions.
- **Instant global view** of current project/s status and progress.
- **Comprehensive dataset** Timing, Production, HSE (Man hours, events), fuel usage, feather, weather, vessel speeds.
- **Versatile analysis/comparisons/summaries** available by project, vessel or company for any period, including timing, production, performance, HSE etc.
- Multiple User-definable **performance indicators**
- **Interactive graphs** allowing drill downs as far as single diary entries, day's production, events etc.
- **Project details page** displaying project configuration & progress.
- **Vessel track** linked to project timing allows track to show timing status by colour code, and hotspots at critical events (e.g. Change of timing code).
- **Vessel speed** available 'real-time' and for analysis, can be broken down for any operation e.g. transit, production, line change etc and for any period.
- **Daily logs / diary** available for any day of any survey, includes **search** facility.
- **Automated email** of daily summaries (all active projects) to selected users.
- Weekly & Monthly **summary/comparison reports** all relevant projects and vessels.
- **Comprehensive QC plots** available if MultiStudio is employed onboard.
- **Optional Financial module** viewed by company, project & vessel. Requires additional permissions for access.